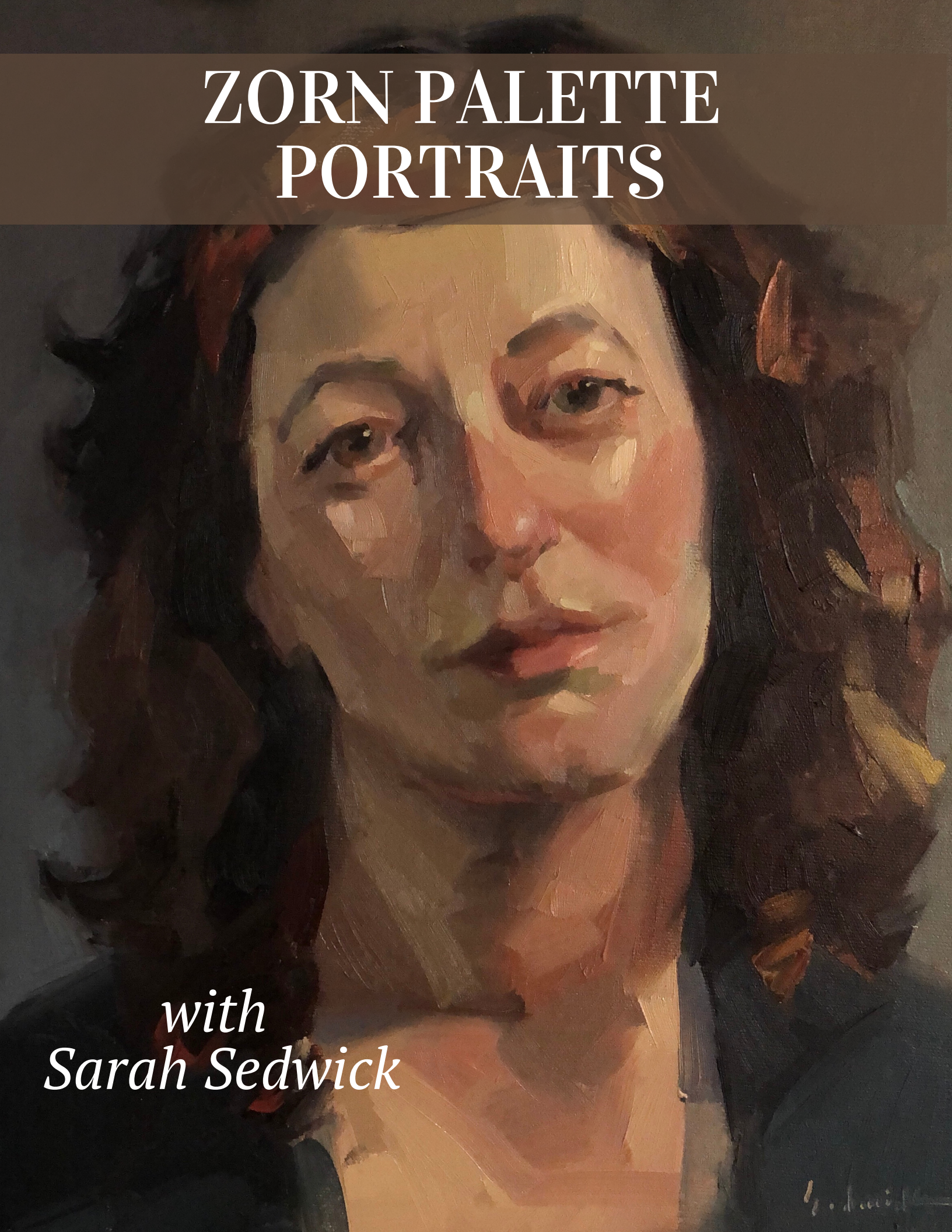


# ZORN PALETTE PORTRAITS

*with  
Sarah Sedwick*





# SUPPLIES

Below is a list of the supplies that I will be using for the projects in this course. However, you are always encouraged to use what you have on hand.

## Paper:

- Four printed copies of the drawing for Shifting Light.
- One canvas, any size, for the long pose portrait. I will be working on an 11x14" One 11x14" or 12x16" canvas for painting the facial features

Paints - I use M. Graham brand. Here are the Zorn palette colors: (in parentheses are possible substitutions)

- Titanium white (zinc white, flake white)
  - Cadmium red (Naphthol red, Pyrrol red)
  - Yellow Ochre
  - Ivory Black (Payne's gray)
- 
- Brushes - I use Princeton Summit Series white taklon, but I encourage you to use what you're comfortable with. A good starter kit is a #2 round and a #4 flat and a #4 or #6 filbert.
  - Palette - a 12x16 (or larger) disposable paper palette pad - or two! Get white, not gray.
  - Palette knife - About 2 inches long, and flexible. You want to be able to scoop up a pile of paint with it. I like the RGM softgrip no. 45 (blue handle)

- Rags or paper towels (I like disposable blue shop towels, available at hardware stores)
- Gamsol
- 2 glass jars with tight-fitting lids, for Gamsol (one for clean Gamsol to use while painting, one to pour your dirty Gamsol into at the end of each painting day. It will settle, and clean Gamsol can be poured off the top and reused.)